

NUOVO

Calum - Home

Technical sheet, for professional use



Simon Pengelly, 2021

The delicate and discreet silhouette of the Home version fits spontaneously into any home environment.

The Calum chair collection offers extremely comfortable seats in a pure and fluid form, which rest on the ground lightly, fitting easily and naturally into any context.

Category: Seating



Aug, 2024

Calum - Home

Family of seats with molded seat in rigid polyurethane and foam padding.
Padded armrests with internal structure in rigid polyurethane or in molded aluminum.
4-legged base or cantilever in steel tube.



Calum Home
Wood

total height 86 cm
seat height 48 cm
width 56 cm
depth 60 cm

Calum Home
4 Star

total height 86 cm
seat height 48 cm
width 56 cm
depth 60 cm

Calum Home
Cantilever

total height 86 cm
seat height 48 cm
width 56 cm
depth 60 cm

Calum Home
Slitta

total height 86 cm
seat height 48 cm
width 56 cm
depth 60 cm

Seat

Leather - NUVOLA



M73 NEVE



M74 BRUNO



M75 OASI



M76 TABACCO



M77 NERO



M78 CAMELIA



M79 KAKI



M80 BORDEAUX



M81 ANTRACITE

Fabric - TIME (Cat. A)



G50 TEGOLA



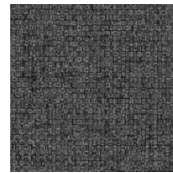
G49 ARGENTO



G56 TUNDRA



G55 VISONE



G47 CEMENTO



G51 GIALLO



G4 DUCALE



G53 SELVA

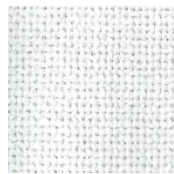


G52 CAVALLETTA

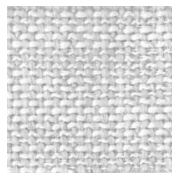


G48 CIPRIA

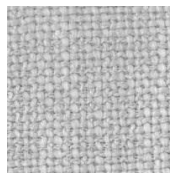
Fabric - NETWORK (Cat. B)



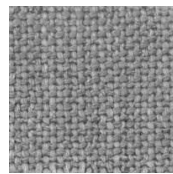
H89 NEBBIA



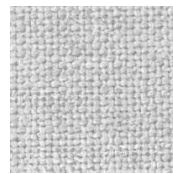
H90 AVORIO



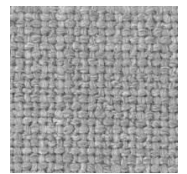
H91 POMICE



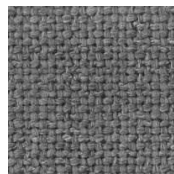
H92 PERNICE



H93 NEBBIA



H94 AMMONITE



H95 ELEFANTE

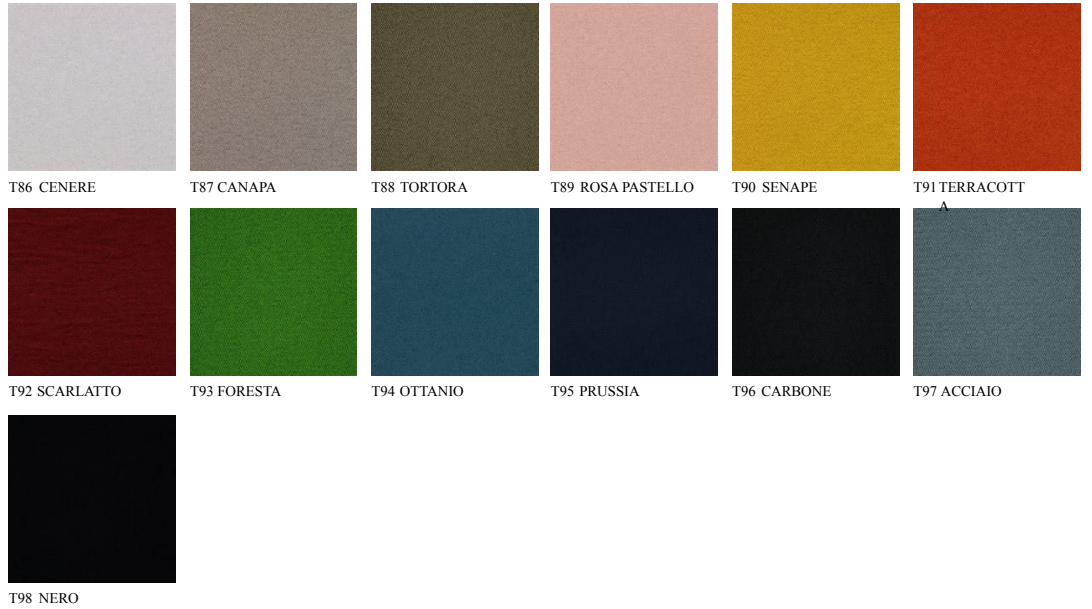


H96 SILICIO



H97 ZAFFIRO

Fabric - MESSENGER (Cat. C)



Fabric - HIGHLANDS (Cat. D)



Base

Lacquers



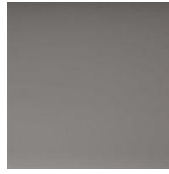
Metals



A03 CROMO



A08 ALLUMINIO
LUCIDO



A18 OSSIDIANA OPACO

Wood



C68 OAK MORO



C76 OAK
GRAFITE



C88 NATURAL
OAK