

NUOVO



Endless

Technical sheet, for professional use

Category: Seating

Arik Levy, 2017

A perfect sensation of infinity generated by an almost virtual line projected into space. The frame supports a gently curved seat, continuing to travel like a laser beam, where every curve or straight line plays a structural or comfort-related role.



Endless

Stool with base in lacquered steel rod, or in the Desalto exclusive finishes. Lacquered MDF seat or oak veneered. The footrest is covered with a stainless steel profile, except for the chromed frame version.



Endless

width 45 cm
depth 43 cm
seat height 64 cm

Endless

width 45 cm
depth 45 cm
seat height 81 cm

Structure

Lacquers



Metals

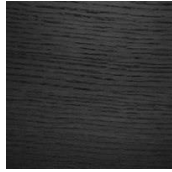


Seat

Lacquers



Wood



C14 OAK BLACK
LACQUERED



C68 OAK MORO

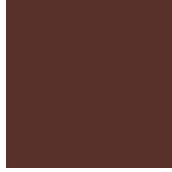


C76 OAK GRAFITE

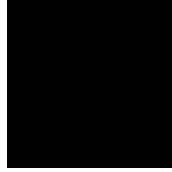


C88 NATURAL OAK

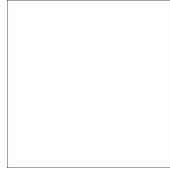
Cow-hide



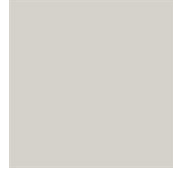
Q04 ROSSO BULGARO



Q05 NERO



Q06 BIANCO



Q13 AVORIO



Q07 ROSSO



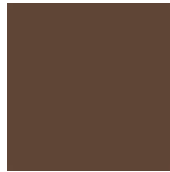
Q08 CAFFE'



Q09 NATURALE
INVECCHIATO



Q10 PRUGNA

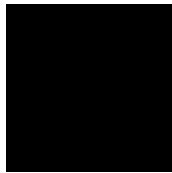


Q14 BRANDY

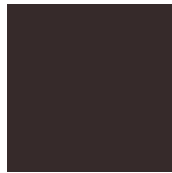


Q15 TORTORA

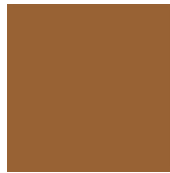
Cuoietto



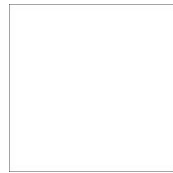
H56 NERO



H55 CAFFE



H54 NATURALE
INVECCHIATO



H50 BIANCO