

Mixit + Mixit Glass

Technical sheet, for professional use

Category: Small tables / Console

Arik Levy, 2005 / 2007

Low tables with simple, graceful shapes, with modern and original details enhanced by a powerful graphic presence and classic colours.



Mixit + Mixit Glass

Mixit: Small table with layered or painted laminate top. Steel tube and base, painted in the same colour as the top. Available with ceramic tops mm 6 too, suitable also for outdoor.

Mixit Glass: Small table with tube and base of lacquered steel or with the exclusive Desalto's finishes. Toughened glass top mm 10.



Mixit

height
42 - 54 - 62 cm

measures
44 x 49 cm

Mixit glass

height
42 - 54 - 62 cm

measures
44 x 49 cm

Frame

Lacquers

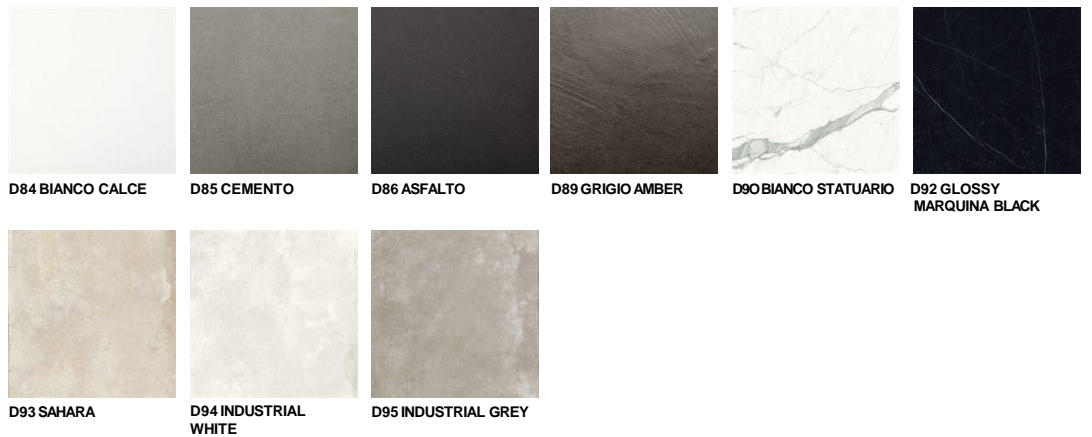


Metals

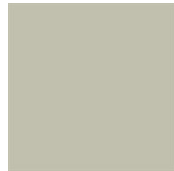


Top - Mixit

Ceramics



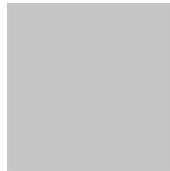
Lacquers



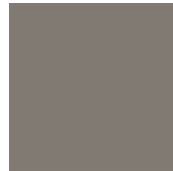
B13 MATT SABBIA



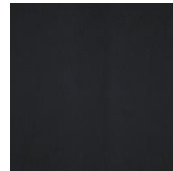
B22 BUNGEE BUNGEE BROWN



B34 LIGHT GREY



B41 TORTORA



B42 GRAFITE



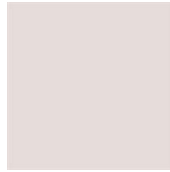
B54 PETROLIO



B56 RUGGINE



B70 LAMPONE RED



B73 QUARZO PINK



B81 CURRY



B82 GREY



B85 MOSS GREEN

Laminate

D34 STRATIFICATO BIANCO



D35 STRATIFICATO NERO

Top - Mixit Glass

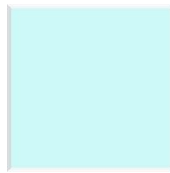
Glass



E32 BRONZO



E65 GRIGIO EUROPA



E71 EXTRA CHIARO TRASPARENTE