

NUOVO



Sand

Technical sheet, for professional use

Category: Seating

Pocci + Dondoli, 2002

A seat of multiple qualities: elegant look, extremely comfortable, light and strong.
Many different versions upholstered in cowhide or leather wherein craft skills embrace advanced production technology. Light, stackable and available in outdoor versions.



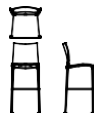
DESALTO

Aug, 2024

Sand

Stackable chair with or without armrests, die-cast aluminum structure.
Seat and back in polypropylene reinforced with glass fiber, stabilized against UV.
Versions lacquered with polypropylene can also be used for outdoor use.
Also available in versions covered in fabric, leather, eco-leather and hide.

The stool (not stackable) has the same characteristics as the chair.



Sand

width 47 cm
depth 54 cm
total height 82 cm
seat height 45 cm

Sand stool

width 47 cm
depth 54 cm
total height 99 cm
seat height 64 cm

Sand high stool

width 47 cm
depth 54 cm
total height 115cm
seat height 80 cm

Sand whit arm stool

width 53,5 cm
depth 54 cm
total height 82 cm
seat height 45 cm
arm rest height 63 cm



Sand stool

width 53,5 cm
depth 54 cm
total height 99 cm
seat height 64 cm
arm rest height 82 cm

Sand high stool

width 53,5 cm
depth 54 cm
total height 115cm
seat height 80 cm
arm rest height 98 cm

Structure

Lacquers



Metals



Seat

Polypropylene



Cow-hide



Cuoietto



Leather



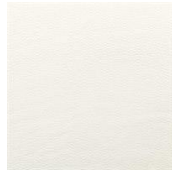
Leather - NUVOLA



Eco Leather



Q13 CAFFE



R02 BIANCO



R06 ANTRACITE



R07 ECRU



R18 ROSSO



R19 AMARANTO



R29 NERO

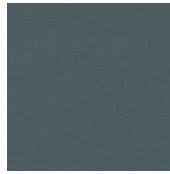
Eco Leather - GLOVE



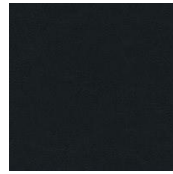
R46 LATTE



R48 PIETRA



R49 PELTRO



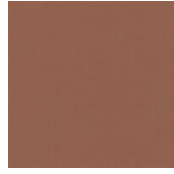
R51 BISTRO



R52 MORO



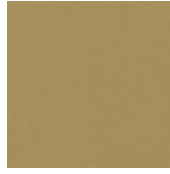
R53 BRUNO



R54 CUOIO



R55 CANNELLA



R56 OLIO

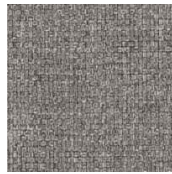


R57 GRANATA

Fabric - TIME (Cat. A)



G50 TEGOLA



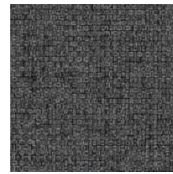
G49 ARGENTO



G56 TUNDRA



G55 VISONE



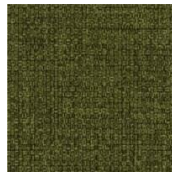
G47 CEMENTO



G51 GIALLO



G54 DUCALE



G53 SELVA



G52 CAVALLETTA



G48 CIPRIA

Fabric - DANDY (Cat. A)



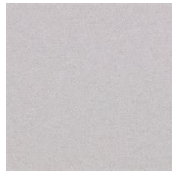
Fabric - LODEN (Cat. A)



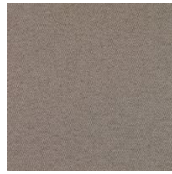
Fabric - SOFTY (Cat. B)



Fabric - MESSENGER (Cat. C)



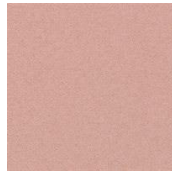
T86 CENERE



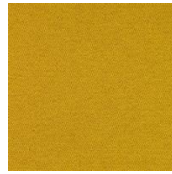
T87 CANAPA



T88 TORTORA



T89 ROSA PASTELLO



T90 SENAPE



T91 TERRACOTTA



T92 SCARLATTO



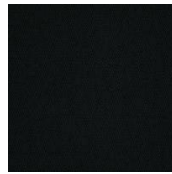
T93 FORESTA



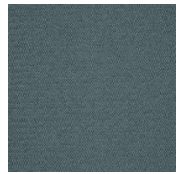
T94 OTTANIO



T95 PRUSSIA



T96 CARBONE



T97 ACCIAIO



T98 NERO